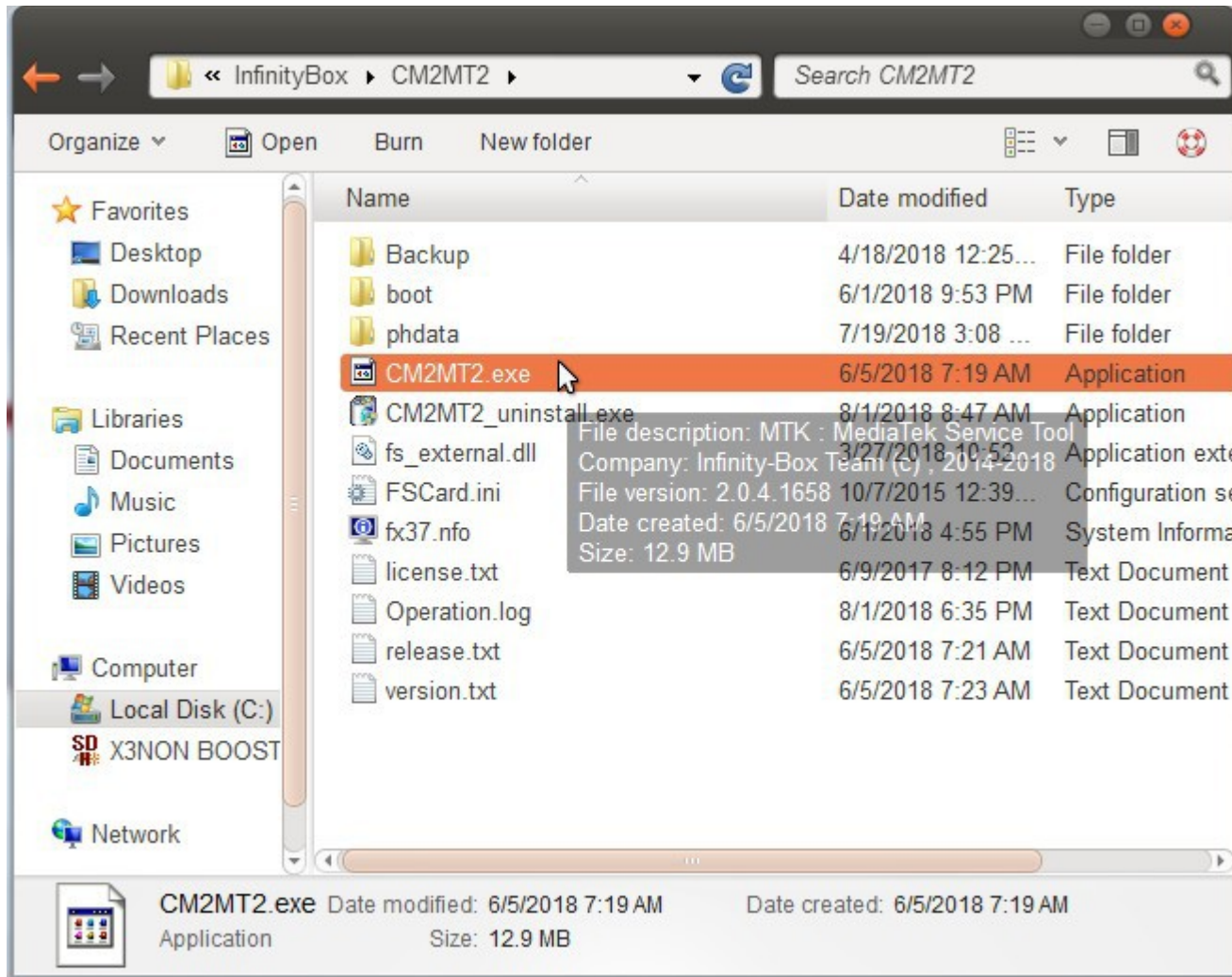


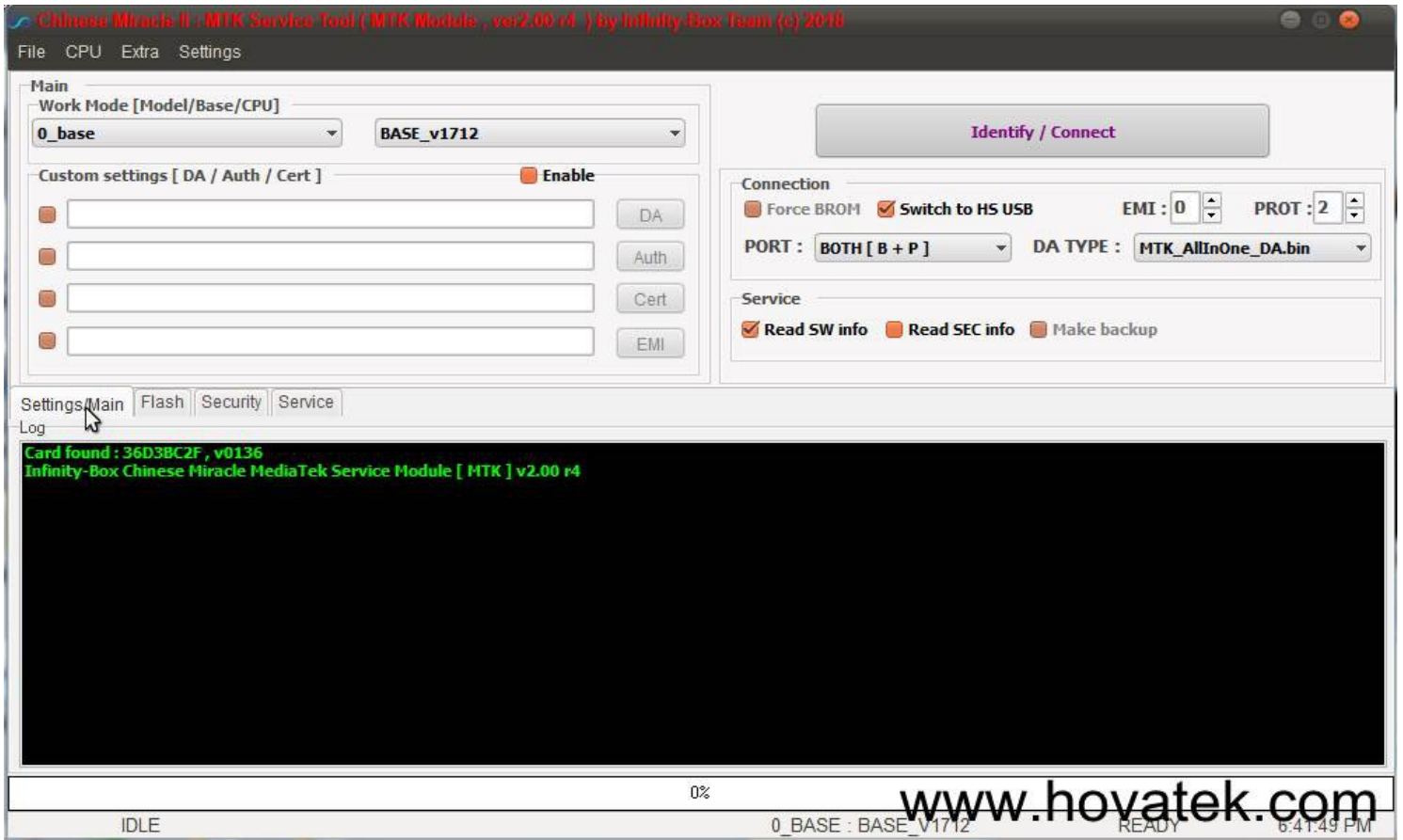
# How to use custom DA files with Infinity-Box CM2MTK

Many thanks to [www.hovatek.com](http://www.hovatek.com) for nice instruction !

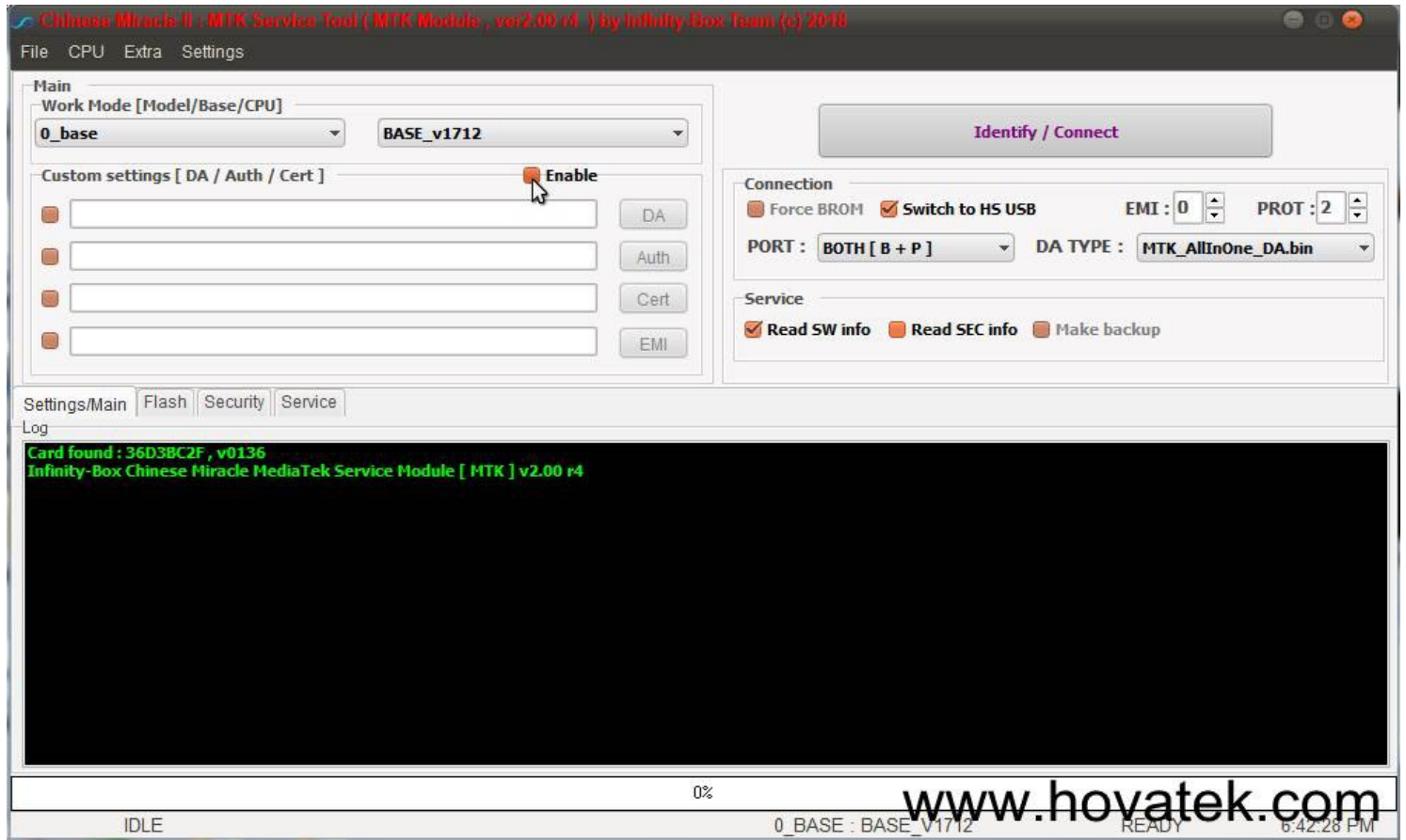
1. Launch CM2MTK.exe



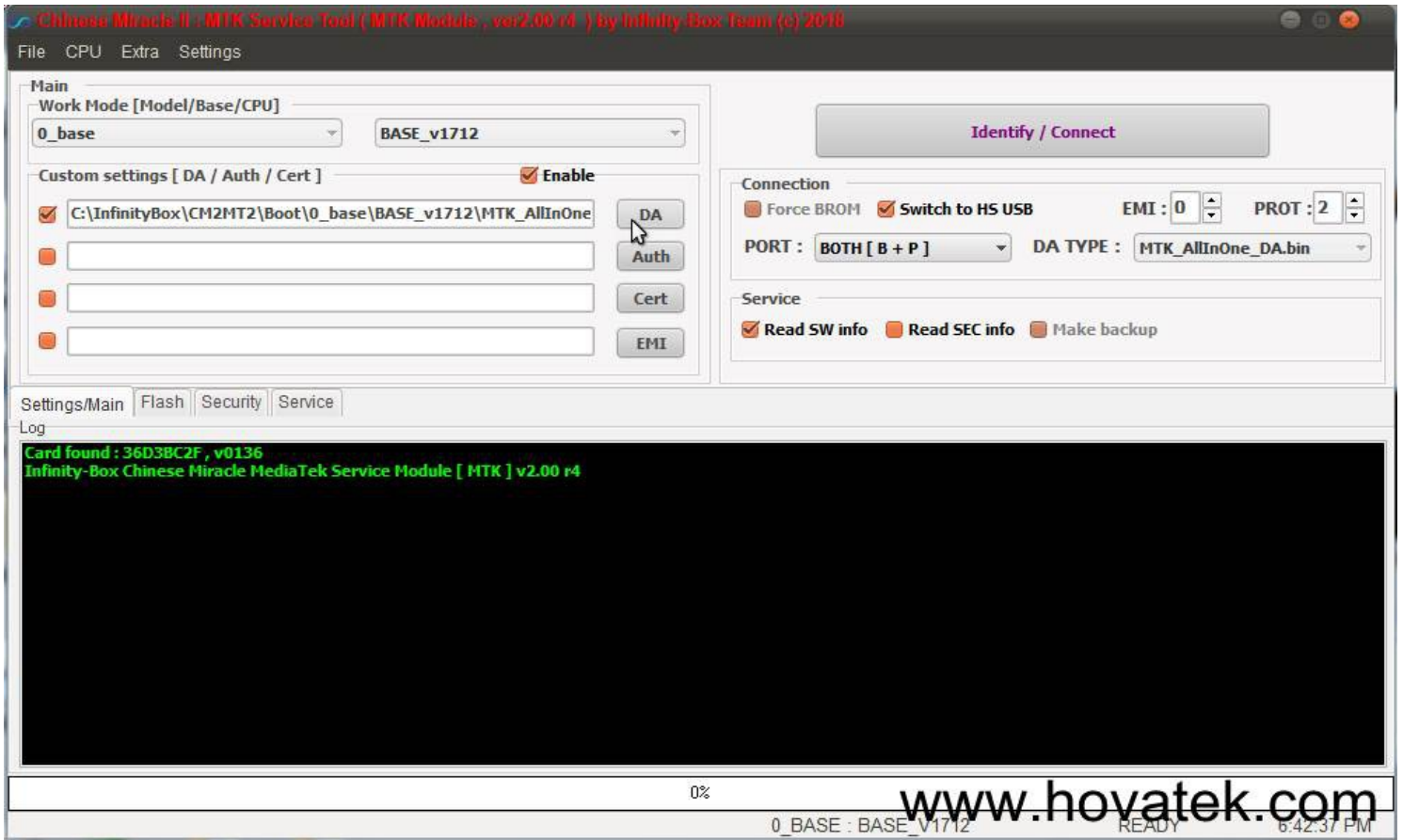
2. Wait till the CM2MTK dashboard comes up then click on the Settings / Main tab



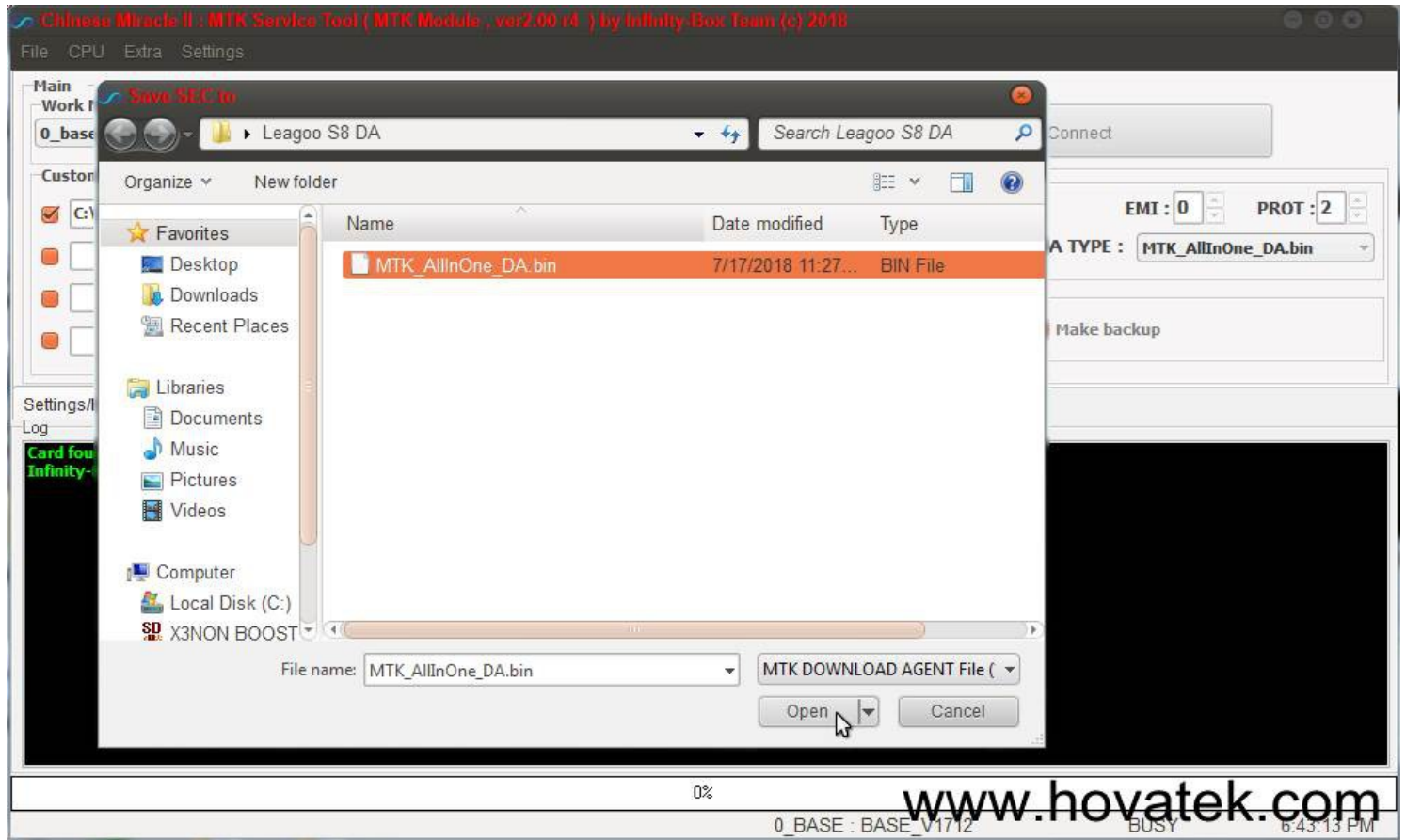
3. Tick the checkbox beside Enable



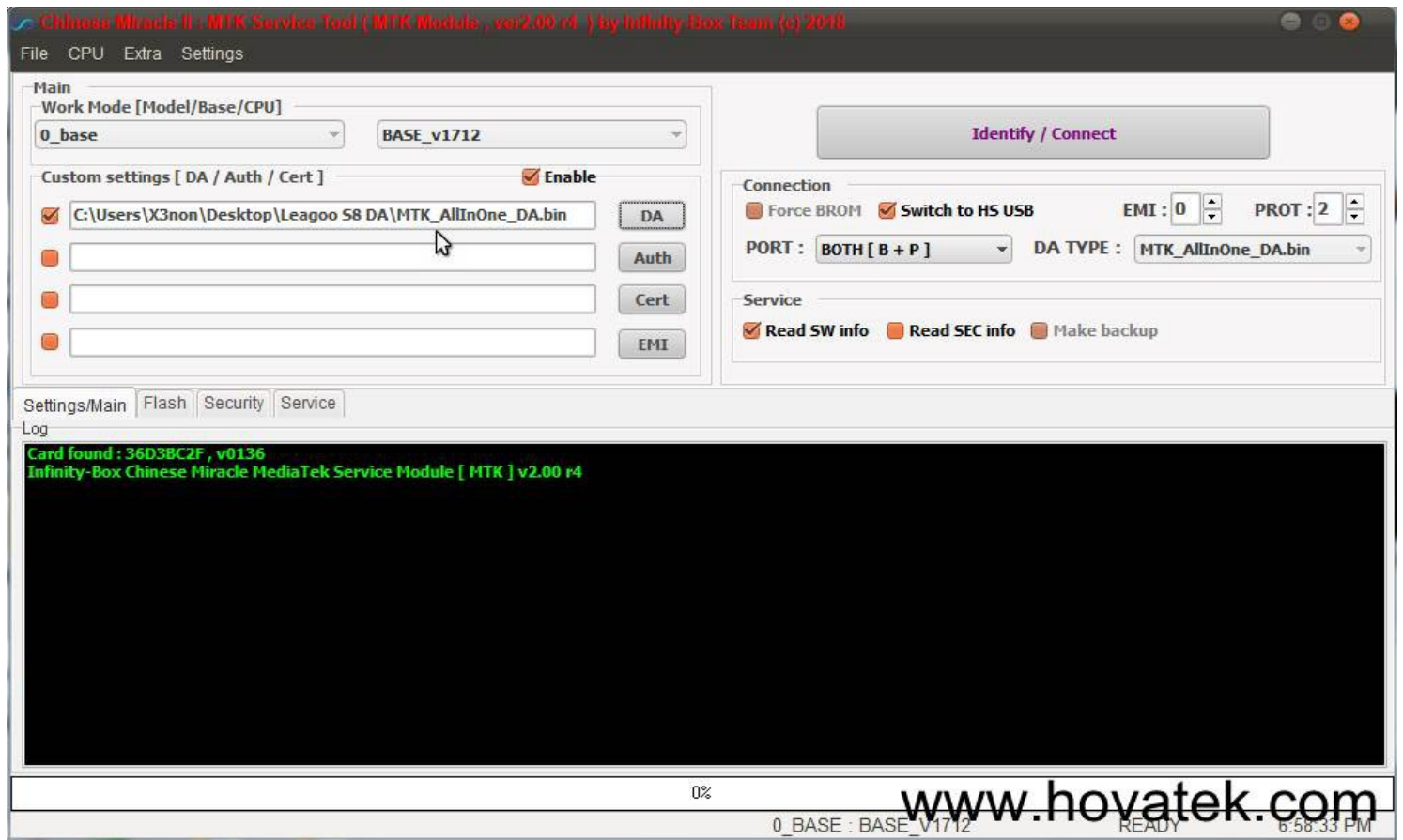
4. Click on DA



5. Navigate to the location of the DA file, select it then click Open



6. The custom DA file should now be loaded (you can see it's file location in the address bar)



7. You may now carry out whatever task you wish on CM2MTK